

Church Planting and Survivability

Ed Stetzer

Source: "Church Planting and Survivability", Ed Stetzer, Center for Missional Research.

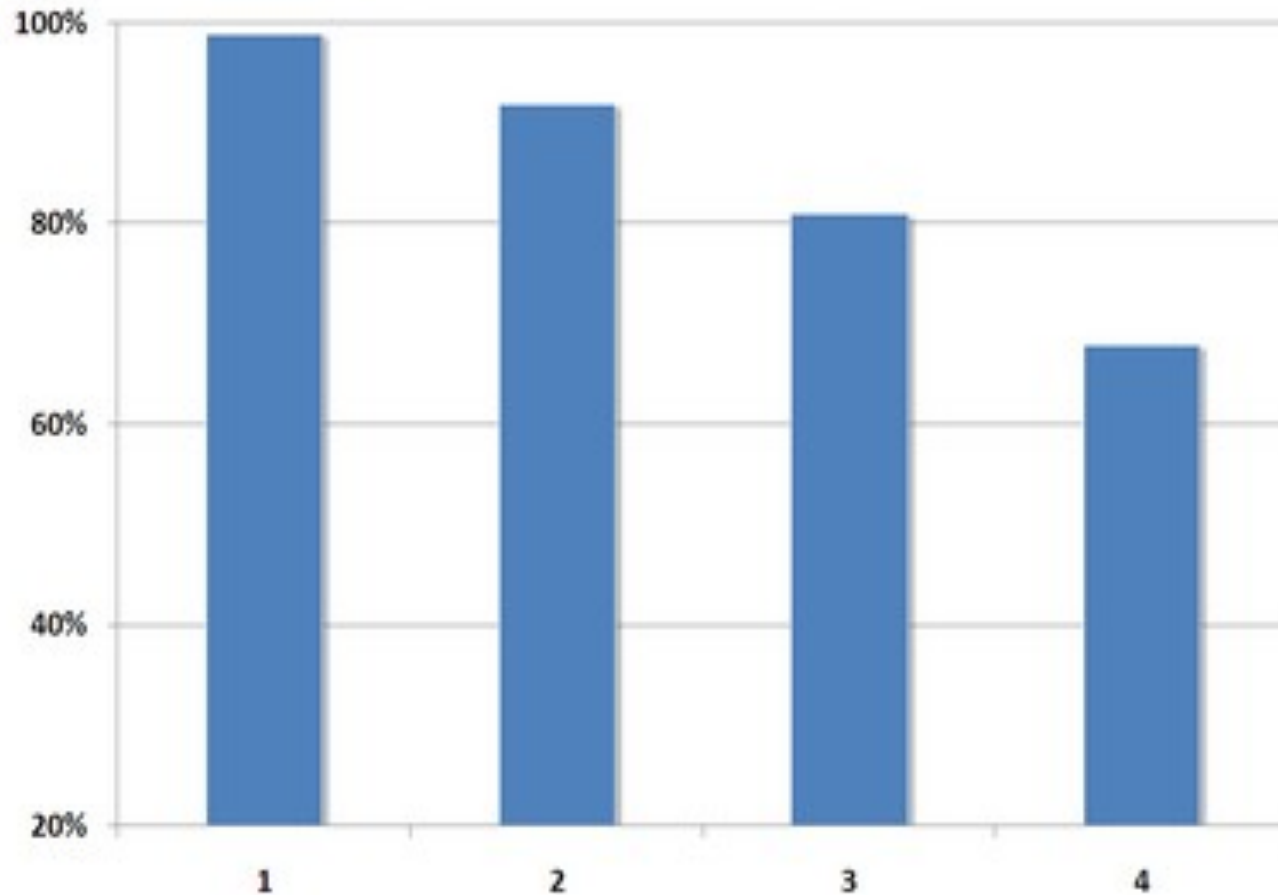


“We shared data with 11 denominations and networks to survey more than 2,000 new churches planted from 2000 to 2005. We were able to determine the status of 1,000 of them and phone interviewed 500 of them.”

Source: “Church Planting and Survivability”, Ed Stetzer, Center for Missional Research.



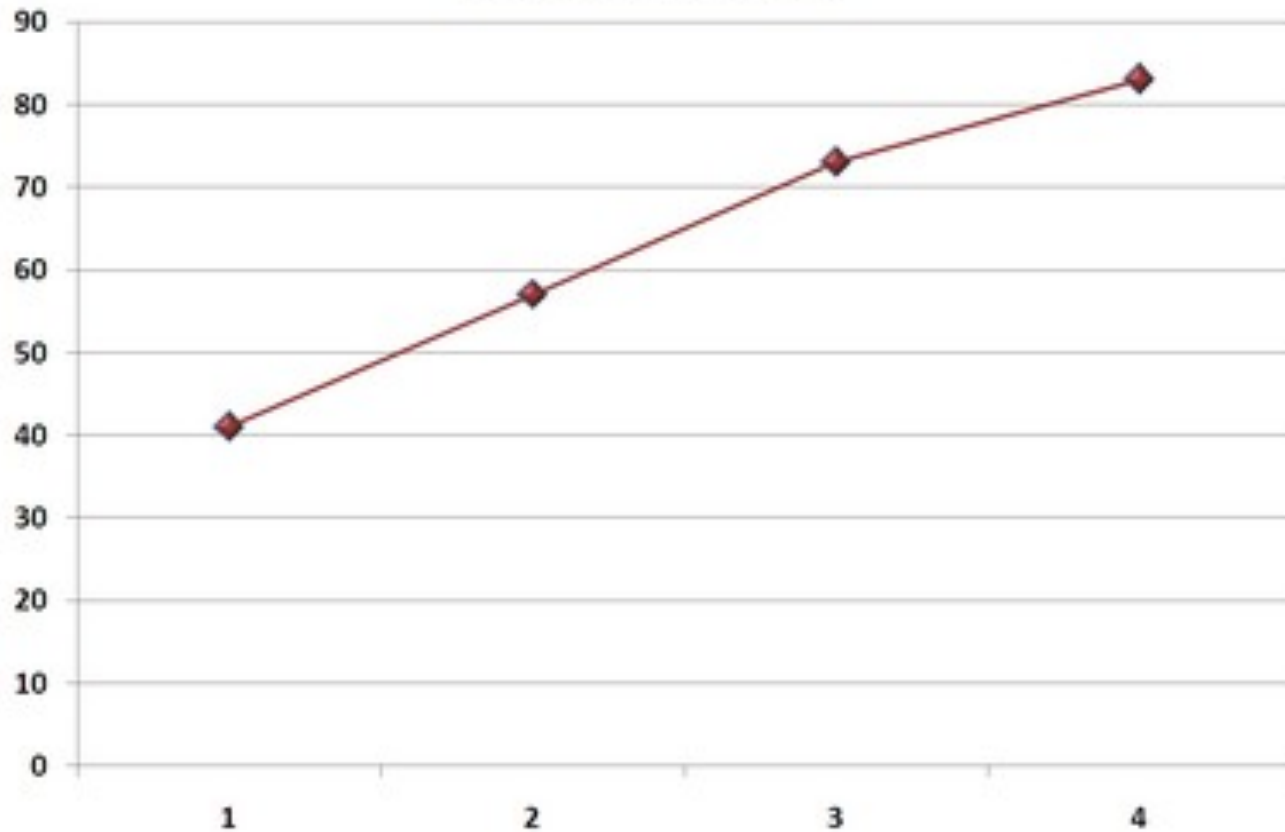
Percent Church Plants Survived by Church Plant Year
(All Denominations Surveyed)



Source: "Church Planting and Survivability", Ed Stetzer, Center for Missional Research.



Mean Annual Church Plant Attendance (All Denominations)



Source: "Church Planting and Survivability", Ed Stetzer, Center for Missional Research.



Church Planting Health and Survivability (part 2)

Ed Stetzer

Source: "Church Planting and Survivability", Ed Stetzer, Center for Missional Research.



- With more than 500 completed interviews, the study reveals that **99 percent** of church plants survive the first year.

Source: "Church Planting and Survivability", Ed Stetzer, Center for Missional Research.



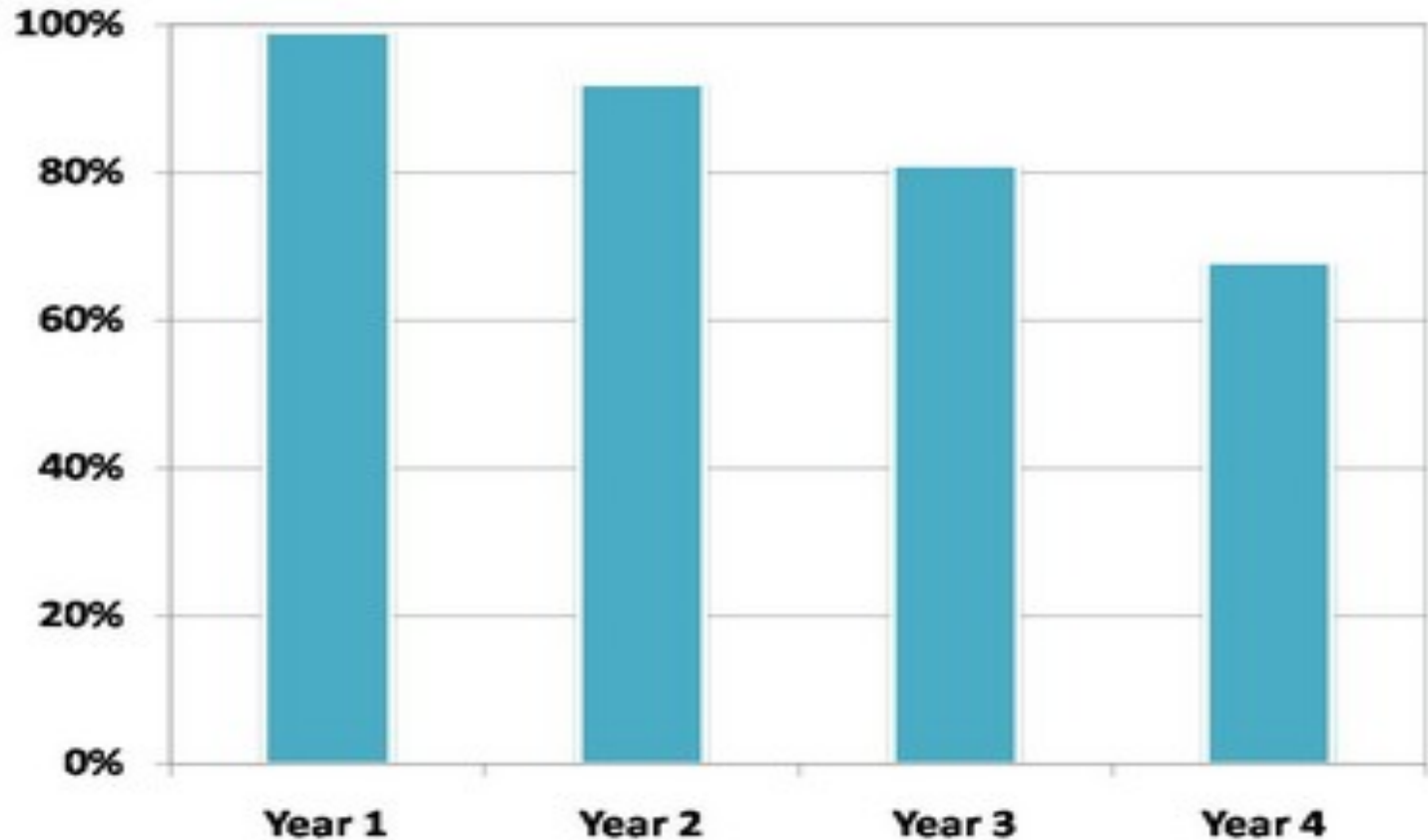
% of church plants that survive

- 92 percent the second year,
- 81 percent the third year, and
- 68 percent the fourth year

Source: "Church Planting and Survivability", Ed Stetzer, Center for Missional Research.



Percent Church Plants Survived by Year



Source: "Church Planting and Survivability", Ed Stetzer, Center for Missional Research.



- Realistic expectations were a significant determining factor of success

Source: "Church Planting and Survivability", Ed Stetzer, Center for Missional Research.



- When the church planter's expectations meet the reality of the church planting experience, the chance of survivability ***increases by over 400 percent.***

Source: "Church Planting and Survivability", Ed Stetzer, Center for Missional Research.



- Of those who said their expectations were realized, 87 percent of their churches survived compared.

Source: "Church Planting and Survivability", Ed Stetzer, Center for Missional Research.



- Only 61 percent of church plants survived among those who did not have their expectations met.

Source: "Church Planting and Survivability", Ed Stetzer, Center for Missional Research.



If the church planter **provides leadership development training** for new church members, the odds of survivability *increase* by over 250 percent.

Source: "Church Planting and Survivability", Ed Stetzer, Center for Missional Research.



- Of those church planters who provided leadership training to church members, 79 percent of their churches survived.

Source: "Church Planting and Survivability", Ed Stetzer, Center for Missional Research.



- Only 59 percent of church plants survived among those who did not provide leadership training.

Source: "Church Planting and Survivability", Ed Stetzer, Center for Missional Research.



- Those who try to plant a church without the support and counsel of others have greater risk and less chance of survivability.

Source: "Church Planting and Survivability", Ed Stetzer, Center for Missional Research.



- The church planter who **meets with a group of church planting peers** at least monthly *increases* the odds of survivability by 135 percent.

Source: "Church Planting and Survivability", Ed Stetzer, Center for Missional Research.



- We found that out of those church planters who were part of a peer group, 83 percent of their churches survived.

Source: "Church Planting and Survivability", Ed Stetzer, Center for Missional Research.



- Only 67 percent of church plants among those who did not have a peer group survived.

Source: "Church Planting and Survivability", Ed Stetzer, Center for Missional Research.



- Church plants that have a proactive stewardship development plan enable the church to become financially self-sufficient.

Source: "Church Planting and Survivability", Ed Stetzer, Center for Missional Research.



- Of those church plants who have a stewardship development plan, 81 percent of churches survived whereas.

Source: "Church Planting and Survivability", Ed Stetzer, Center for Missional Research.



- Only 68 percent of church plants survived among those who did not have a stewardship plan.

Source: "Church Planting and Survivability", Ed Stetzer, Center for Missional Research.



- Expectations might not seem like they would make such a profound difference in the survivability rate, **but they had the biggest impact (400%)**.

Source: "Church Planting and Survivability", Ed Stetzer, Center for Missional Research.

